

# 文部科学大臣杯 第29回全国高等学校対抗ボウリング選手権大会



Oil Pattern Distance: <b>45 Feet</b>	Reverse Brush Drop: <b>40 Feet</b>	Oil Per Board: <b>50 uL</b>
Forward Oil Total: <b>17.55 mL</b>	Reverse Oil Total: <b>8.8 mL</b>	Volume Oil Total: <b>26.35 mL</b>
Forward Boards Crossed: <b>351 Boards</b>	Reverse Boards Crossed: <b>176 Boards</b>	Total Boards Crossed: <b>527 Boards</b>

	Start	Stop	Loads	Speed	Crossed	Start	End	Feet	T.Oil
1	2L	2R	1	10	37	0.0	0.0	0.0	1850
2	5L	5R	2	14	62	0.0	3.9	3.9	3100
3	6L	6R	1	14	29	3.9	5.8	1.9	1450
4	7L	7R	1	14	27	5.8	7.7	1.9	1350
5	8L	8R	2	18	50	7.7	12.8	5.1	2500
6	10L	10R	3	18	63	12.8	20.4	7.6	3150
7	11L	11R	2	18	38	20.4	25.5	5.1	1900
8	12L	12R	1	18	17	25.5	28.0	2.5	850
9	13L	13R	1	22	15	28.0	31.1	3.1	750
10	14L	14R	1	26	13	31.1	34.7	3.6	650
11	2L	2R	0	30	0	34.7	45.0	10.3	0

⏪ ⏩ Forward Reverse More

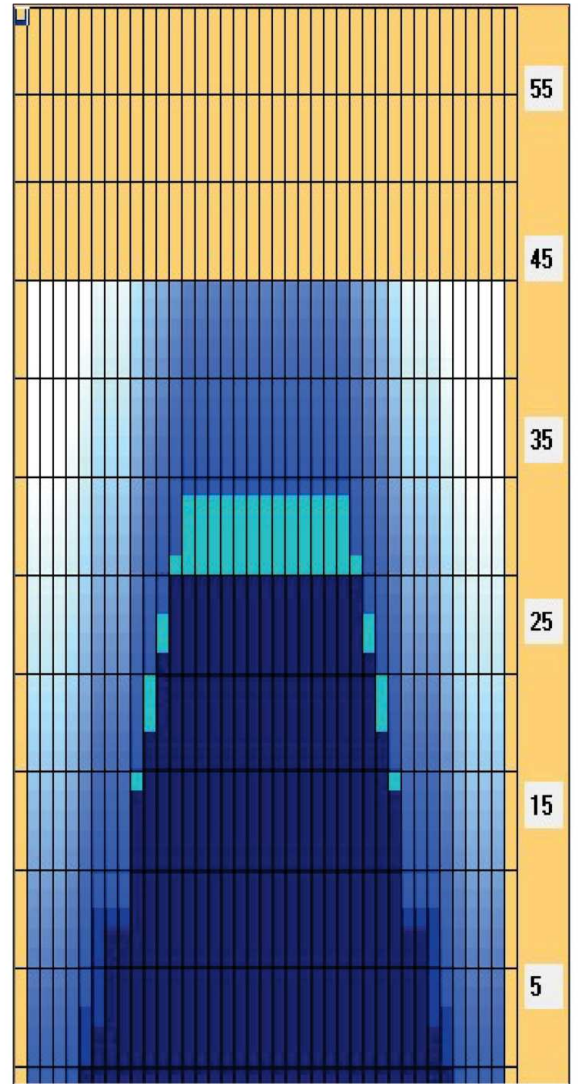
	Start	Stop	Loads	Speed	Crossed	Start	End	Feet	T.Oil
1	2L	2R	0	30	0	45.0	30.0	-15.0	0
2	13L	13R	1	30	15	30.0	25.8	-4.2	750
3	12L	12R	1	26	17	25.8	22.2	-3.6	850
4	11L	11R	1	22	19	22.2	19.1	-3.1	950
5	10L	10R	2	22	42	19.1	12.9	-6.2	2100
6	7L	7R	2	18	54	12.9	7.8	-5.1	2700
7	6L	6R	1	18	29	7.8	5.3	-2.5	1450
8	2L	2R	0	14	0	5.3	0.0	-5.3	0

⏪ ⏩ Forward Reverse More

Conditioner:  
Type In or Select One

TransferType:  
Type In or Select One

- Forward
- Reverse
- Combined
- Buff



Item	3L-7L:18L-18R	8L-12L:18L-18R	13L-17L:18L-18R	18L-18R:17R-13R	18L-18R:12R-8R	18L-18R:7R-3R
Description	Outside Track:Middle	Middle Track:Middle	Inside Track:Middle	Middle: Inside Track	Middle:Middle Track	Middle:Outside Track
Track Zone Ratio	6.39	1.58	1.01	1.01	1.58	6.39

